



## 'Sharing Connection' 2024 by Taungurung artist, Maddi Moser



Maddi Moser (Taungurung artist), 'Sharing Connection', 2024

The second version below includes detailed commentary about the symbolism that is woven into this beautiful artwork.

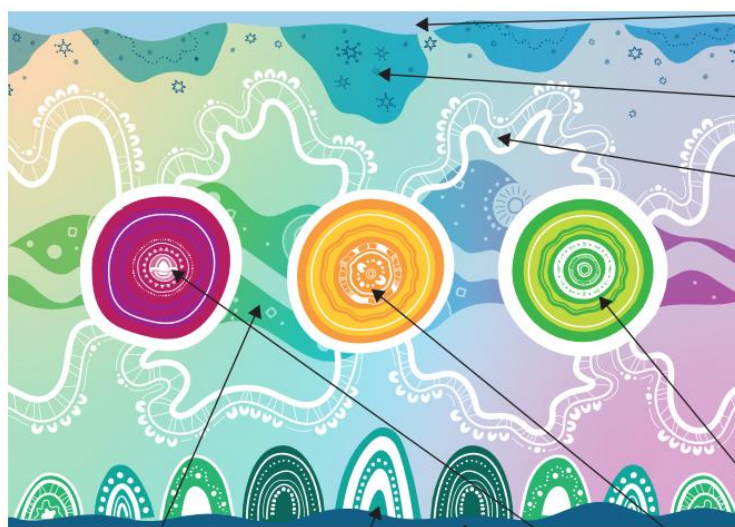
## AIDR ARTWORK EXPLANATION

This artwork overall represents connection through all living things.

It still uses the circles to demonstrate the sharing of knowledge and process of learning - circles are continuous and have no beginning or end, similar to the sharing of stories, wisdom and learning. These circles represent 'people', 'the land' and 'animals' and are connected to show that we are all connected through our shared environment.

The pattern in the centre still represents wisdom and the flow of teaching, learning and sharing knowledge and skills. It reminds us that we are connected through the past and into the present.

Sky Country and Country are both represented at the top and the bottom of the image, and water is represented at the bottom and through the flowing 'river' lines in the centre. The circles sit in between Sky Country and Country to symbolise how we need our environment to thrive.



This pattern represents the knowledge and wisdom passed down through generations of communities both Indigenous and non-Indigenous. It represents how all life is connected.

Mountains represent environment (land/country)

This dark blue line represents water, a very important part of Country.

This circle represents Country. It has both a mountain in it (land) and lines that represent water.

Represents the environment (Sky Country). This lighter blue represents the sky and then the stars sit below this

Sky/stars/constellations - Southern Sky as suggested

These 'squiggly' lines represent both the sharing of knowledge, connection and water. Water is an important theme in my artwork as to me it represents how all life is connected, through this very important resource.

The patterns represent knowledge that we have found, are sharing and are still looking for. The lines or gaps can be looked at knowledge we have or the knowledge gaps, it is up to the viewer and possibly the topic of the knowledge as to whether the lines or gaps represent the amount of knowledge that we have.

The 'people' along the lines represent the different groups of people that AIDR are made up of and the people you share this knowledge with.

This circle represents the animals of our world as seen by the tracks.

This circle is about community and two people sitting down to have a conversation. It represents the people of our world and our communities.